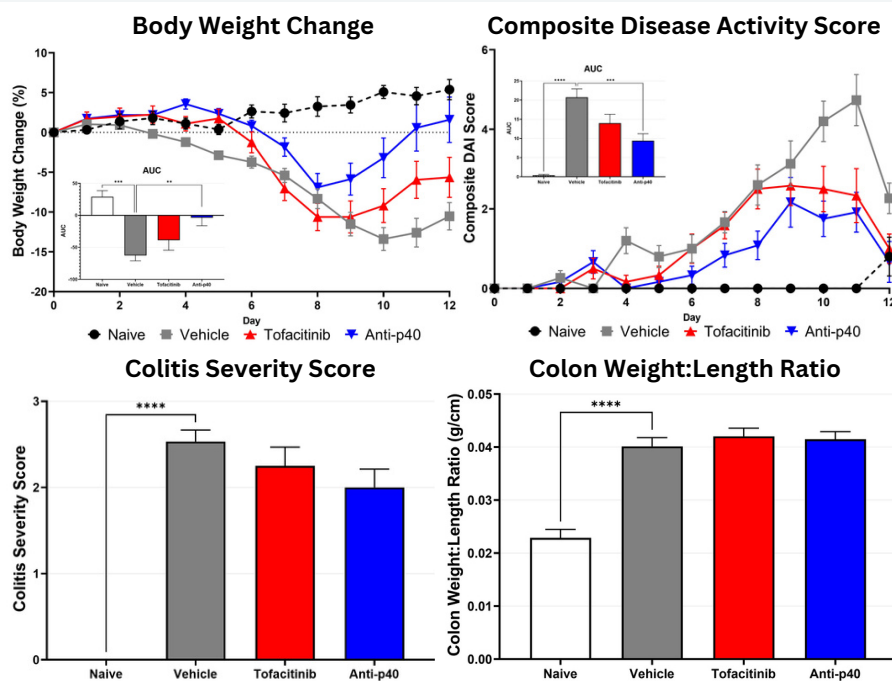
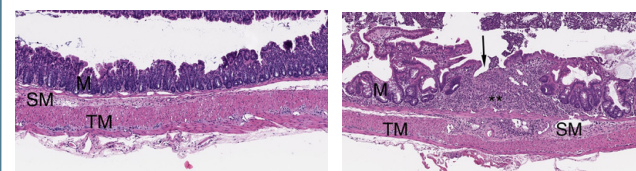


CUSTOMIZED PRECLINICAL SERVICES

Biomodels LLC, an AAALAC accredited preclinical CRO, has spent the last 25+ years developing and executing predictive and highly translational efficacy studies for biotechnology and pharmaceutical companies.

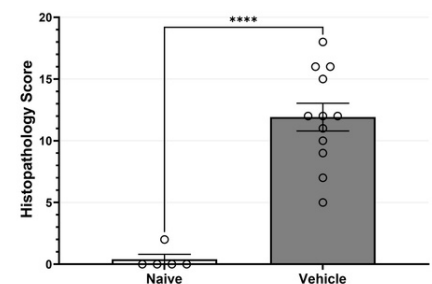
RODENT COLITIS MODELS**DSS-induced Colitis (Acute/Chronic)**

Colitis is induced in C57BL/6 mice via exposure to DSS-treated drinking water. Animals are evaluated daily for survival and body weight as well as presence/severity of diarrhea and blood in stool. Colitis can be assessed without animal sacrifice by video endoscopy. At sacrifice, colon weight and length are measured, and samples can be collected for a variety of endpoints including histopathology, cytokine analysis, and flow cytometry. Standard readouts include weight loss, diarrhea and blood in stool scoring for disease activity index (DAI), colitis severity and stool consistency scoring via endoscopy, colon weight and length measurement at euthanasia, and histopathology analysis. Additional readouts include colon cytokines, colon MPO, fecal inflammatory markers, and immunophenotyping via FACS.

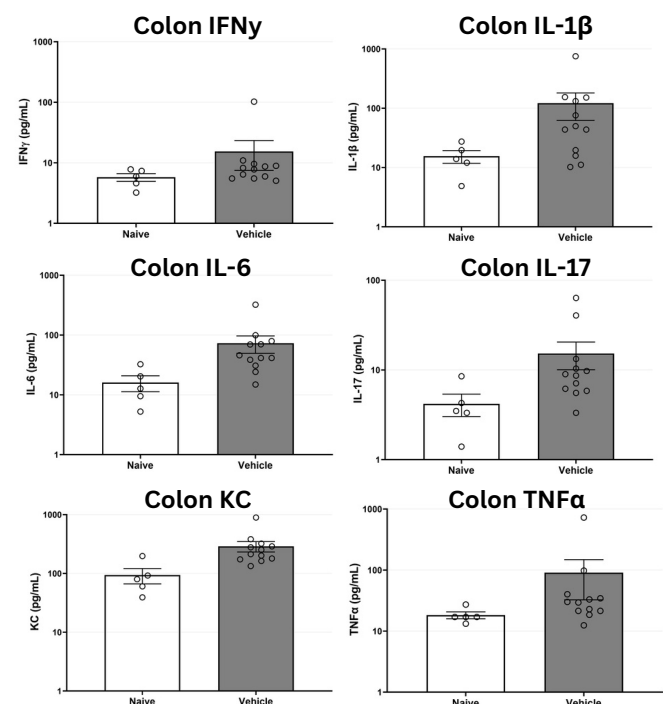
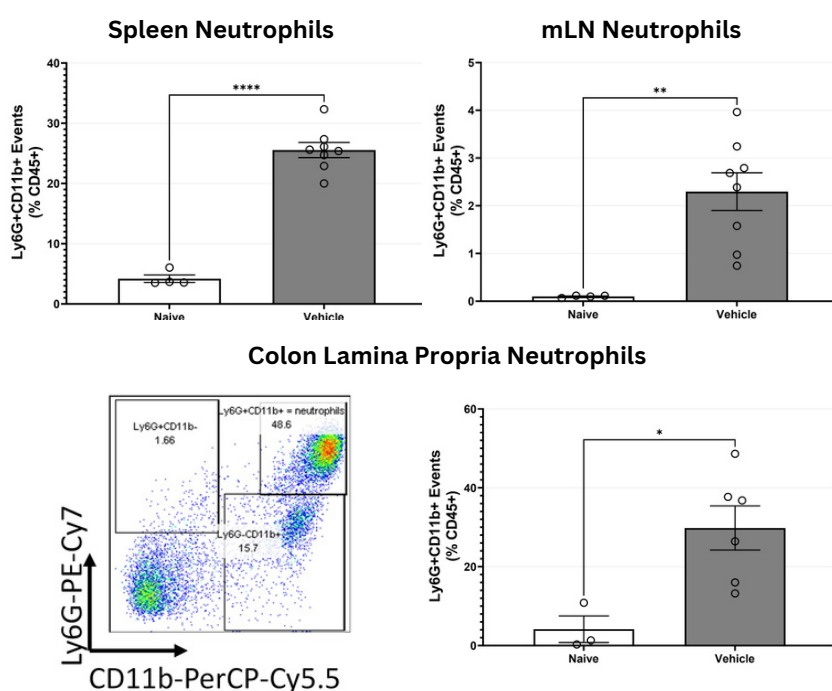
In Life Endpoints**Histopathology**

Naïve

Vehicle

Sum Histopathology Score

Histopathology analysis performed by
 Dallas Tissue Research, info@dallastissue.com

**Ex Vivo Endpoints**

RODENT COLITIS MODELS (CONTINUED)

Adoptive Transfer Colitis

Colitis is induced in RAG2-/- mice via adoptive transfer of naïve Th cells harvested from C57Bl/6 donors. Engraftment is confirmed by assessment of peripheral blood CD4+ T cell percent frequency two weeks following transfer, and animals are randomized into treatment groups thereafter. Experiments are typically 6-8 weeks in duration.

In Life Endpoints

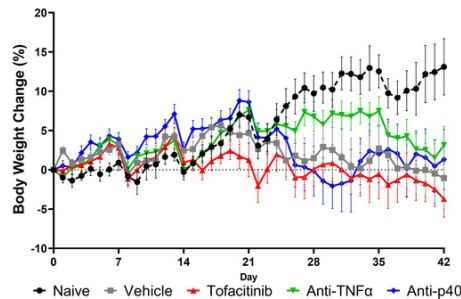
Have a preclinical project in mind?



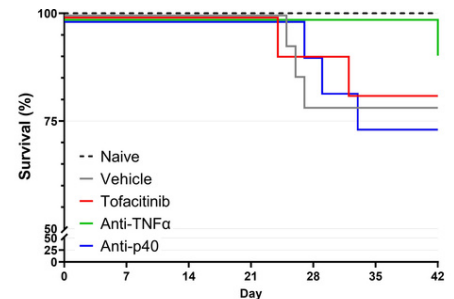
Schedule a call
with Caitlin
Parelo, Ph.D.,
the scientist on
our team who
leads our
Colitis studies!

[Click here to submit your request.](#)

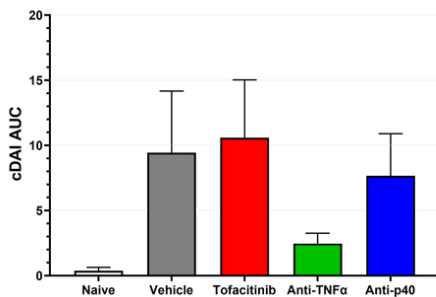
Body Weight Change



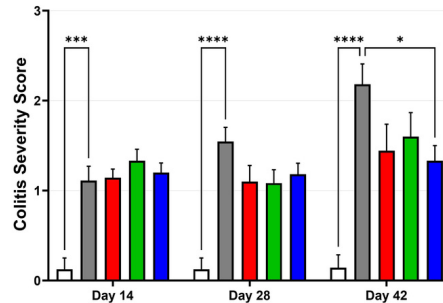
Survival



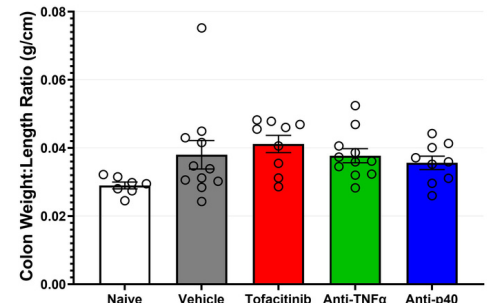
Composite Disease Activity Score



Colitis Severity Score

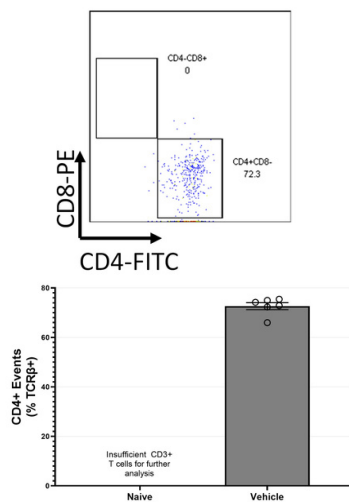


Colon Weight: Length Ratio

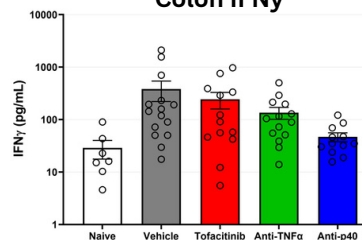


Ex Vivo Endpoints

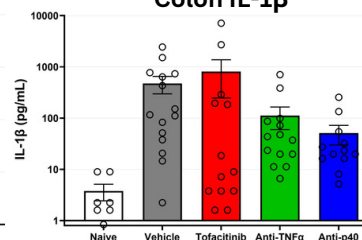
Colon Lamina Propria CD4+ T Cells



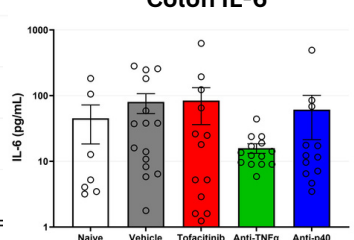
Colon IFNγ



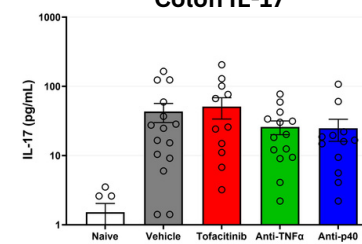
Colon IL-1β



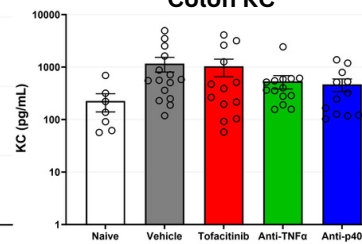
Colon IL-6



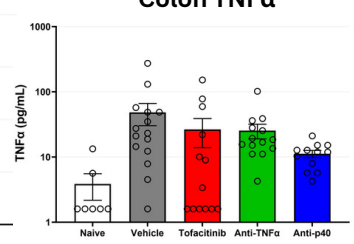
Colon IL-17



Colon KC



Colon TNFα



2023 EVENTS

Microbiome Movement Drug Development | June 29 - 30, 2023 | Boston, MA

Anti-Fibrotic Drug Development (AFDD) | October 25 - 26, 2023 | Boston, MA

AREAS OF EXPERTISE

Cancer Supportive Care | Inflammatory & Autoimmune Diseases | Oncology | Microbiome |
Radiation Countermeasures | Metabolic Disease | Fibrosis | Microbiology & Infectious Disease |
Pulmonary Disease | Cardiovascular | Neurological & Psychological Disorders | Pharmacology